

LAIMA

TECHNICAL RIDER & STAGE PLAN



MONITOR SYSTEM SPECIFICATIONS AND REQUIREMENTS

Monitors connections from FOH AUX DESK
DRIVE RACK (Stage position)
4 x dual 1/3 Octave Graphic Equalizers BSS or Klark Teknik

AMPLIFICATION / X-OVERS / WEDGES

9 x Bi-Amped the same wedges L-ACOUSTICS 115XT HiQ or EV Xw12 (1x12"LF +1.5"Drivers)	must be provided with amplifiers and processors (crossovers)
1 x Drum Fill	must be provided with amplifiers and processors
2 x 3 way side Fills	must be provided with amplifiers and processors

OUTPUT MIX ASSSIGNMENT

Stage Left & Right	2 Side Fill
LAIMA center front of stage	4 wedges
BACK vocal	2 wedges (left side)
STEFAN key (Triton Pro + Triton classic)	1 wedge (right side)
LEAD Guitar	1 wedge
BASS Guitar	1 wedge
DRUM	1 drum fill

BACKLINE EQUIPMENT TO BE PROVIDED BY PROMOTOR

1 x AMPEG 410Pro Cab FOR BASS
1 x AMPEG AMP / SVT III Pro HEAD FOR BASS
1 x FENDER THE TWIN FOR GUITAR

DRUM SET:TAMA STARCLASSIC MAPLE:

Name	Diameter	Depth
1 x BASS DRUM	20"	18"
1 x TOM - TOM	10"	8"
1 x TOM - TOM	12"	8"
1 x FLOOR TOM	14"	14"
1 x SNARE DRUM	14"	6.5"

DRUMHEADS:

REMO CLEAR PINSTRIPE on TOM-TOMS;
REMO CLEAR POWERSONIC on BASS DRUM;
REMO COATED AMBASSADOR on SNARE DRUM.

TAMA HARDVARE:

3 x STAGE MASTER BOOM CYMBAL STANDS HC33BW;
1 x STAGE MASTER HI-HAT STAND HH35W (including Hi-hat Clutch);
1 x ROAD PRO SNARE STANDS HS700WN;
1 x 1st CHAIR ROUND RIDER QUARTET HT440;
IRON COBRA POWER GLIDE SINGLE PEDAL HP900P;
COWBEL HOLDER CBH20;

LATIN PERCUSSION MAMBO BELL;

SABIAN CYMBALS:

1 x 20" HHX EVOLUTION RIDE;
1 x 16" HHX EVOLUTION CRASH;
1 x 12" AAX O-ZONE SPLASH;
1 x 13" VAULT FIERCE HATS;

1 x Korg Triton Pro
1 x Korg Triton Classic
1 x DOUBLE KEYBOARD STAND
1 x GUITAR STAND
1 x ACOUSTIC GUITAR STAND
1 x BASS GUITAR STAND

BACKLINE EQUIPMENT SHALL BE BROUGHT BY US

1 x Bass guitar
1 x Guitar
1 x Acoustic guitar

FOH MICROPHONE CHANNEL LIST:

Chanel	Instrument	Mic/Output	Insert
1	KICK	BETA52	GATE
2	SNARE top	SM 57	
3	SNARE bottom	BETA 57	
4	HI-HATS 1	AKG 451, EV RE200	
5	TOM 1	BETA 98, EV ND468	GATE
6	TOM 2	BETA 98, EV ND468	GATE
7	FLOR TOM 3	BETA 98, EV ND468	GATE
8	O/H left	AKG 414, KSM 32	
9	O/H right	AKG 414, KSM 32	
10	BASS GUITAR	DI (Klark Teknik)	
11	LEAD GUITAR	SM 57	
12	ACCOUSTIC GUITAR	DI (Klark Teknik)	
13	STEFAN KORG Triton Pro left	DI	
14	STEFAN KORG Triton Pro right	DI	
15	STEFAN Triton Classic left	DI	
16	STEFAN Triton Classic right	DI	
17	BACK 1vocal Wireless Mic BETA 87	Direct/XLR	Compressor
18	BACK 2vocal Wireless Mic BETA 87	Direct/XLR	Compressor
19	STIBELIS Wireless Mic BETA 87	Direct/XLR	Compressor
20	LAIMA Wireless Mic KSM 9	Direct/XLR	Compressor
21	PCM80 Left	LINE	
22	PCM80 Right	LINE	
23	SPX 900 Left	LINE	
24	SPX 900 Right	LINE	
25	TC D - TWO	LINE	
26	TC D – TWO	LINE	
27	CD	LINE	
28	CD	LINE	

SOUND SYSTEM SPECIFICATIONS AND REQUIREMENTS

HOUSE SYSTEM

A premium professional quality stereo PA system capable of producing 110db SPL at the rear of the seating area(not less 10 kW for 1000 seats venue), with flat (+3db/-3db) frequency response from 30Hz-18kHz. The system should be at least 4-way with active crossovers. Small full range speakers should be provided for front fills; wished to be hung. These should be fed from a matrix to provide separate volume control from the house mix position.

SPEAKERS

4-way active, L-ACOUSTICS KUDO, or EV XLC – systems with Line Array technologies – are examples of acceptable speaker brands.

HOUSE CONSOLE

32 inputs channel. Minimum - 10AUX
Preferred brands are: MIDAS Heritage 1000

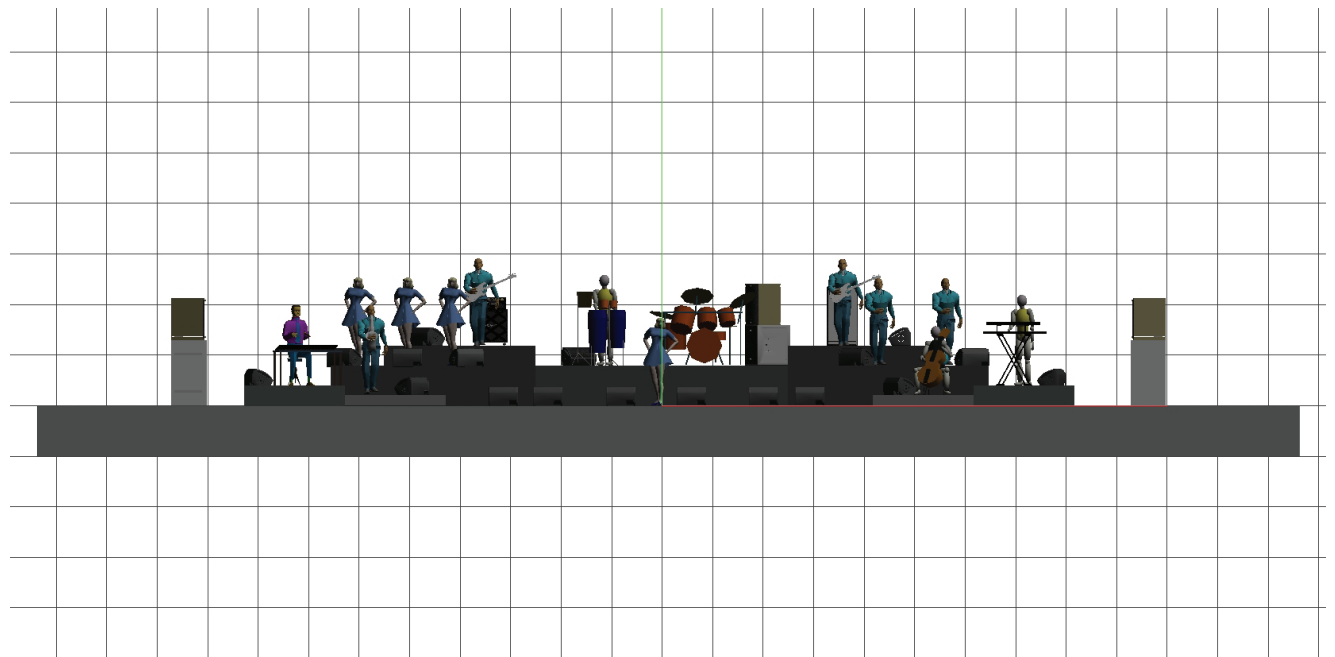
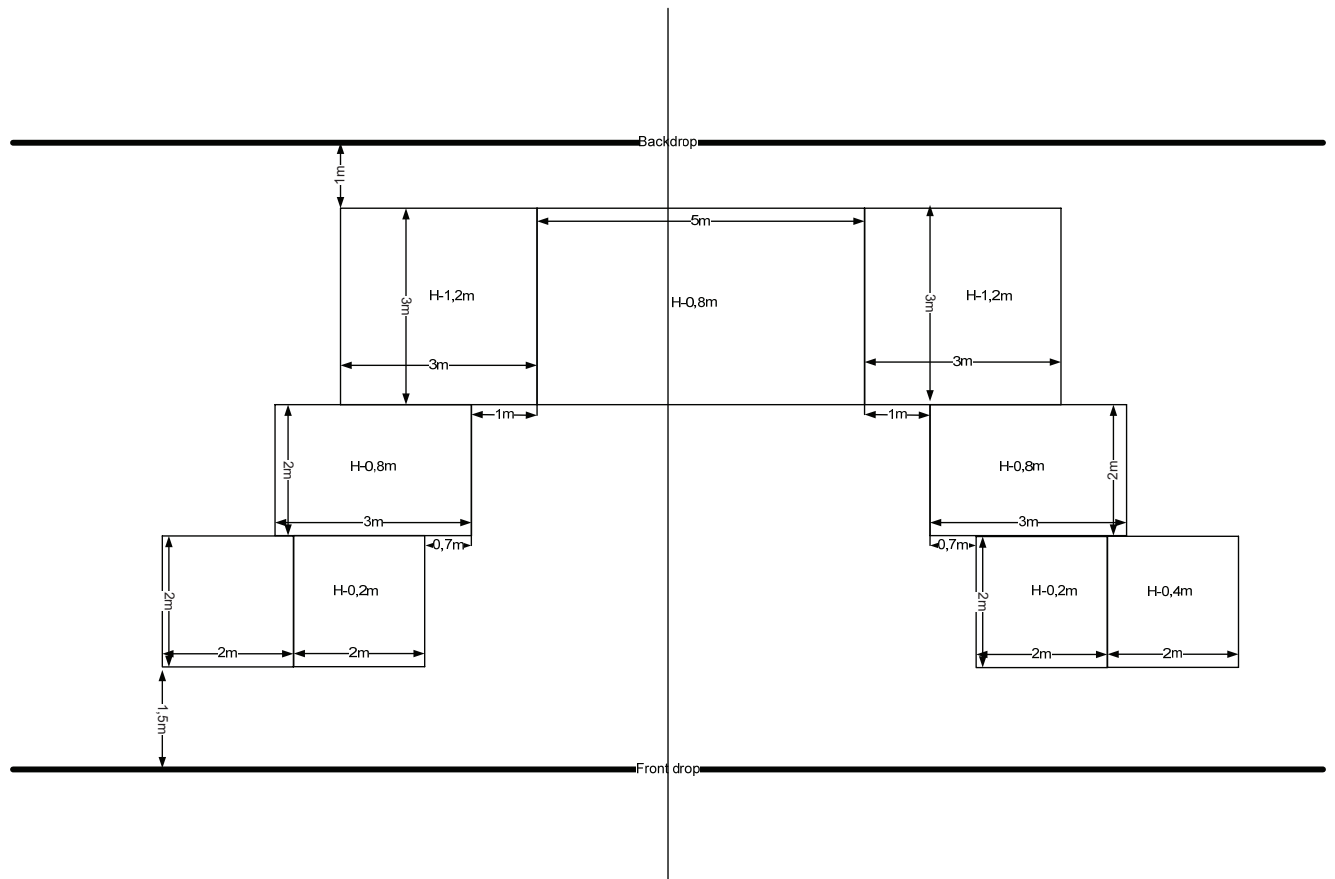
HOUSE EFFECTS RACK

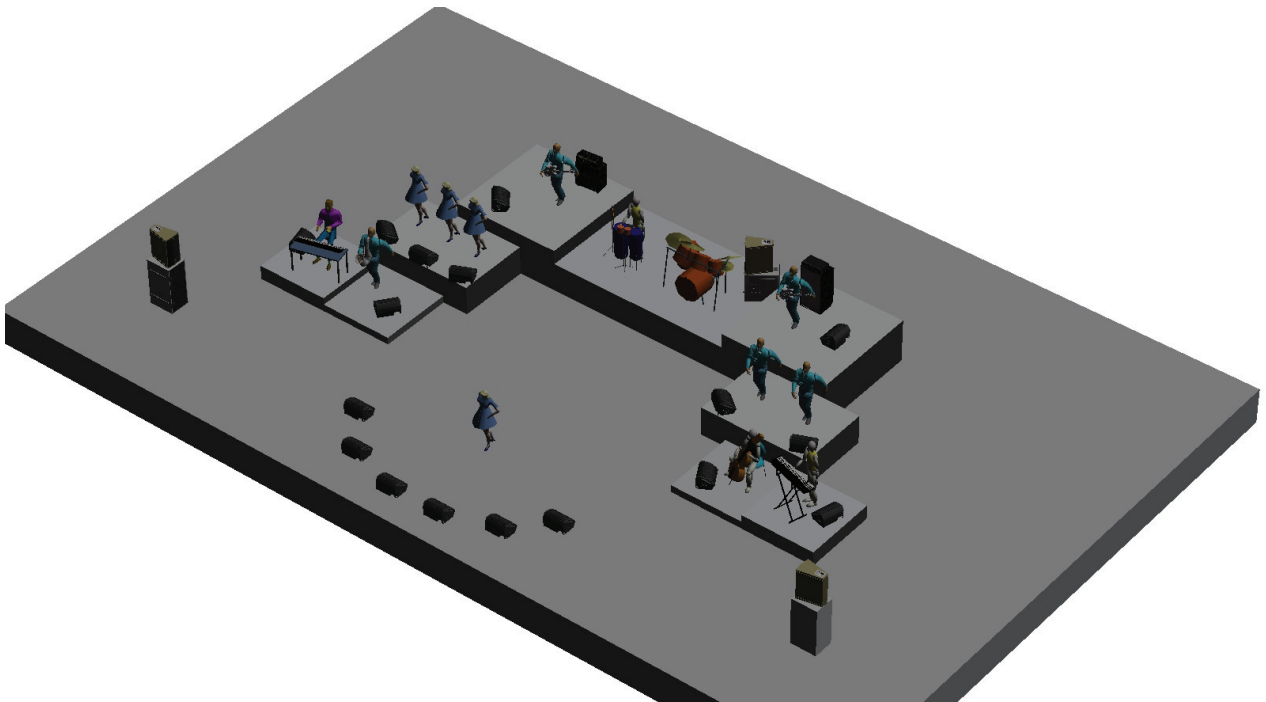
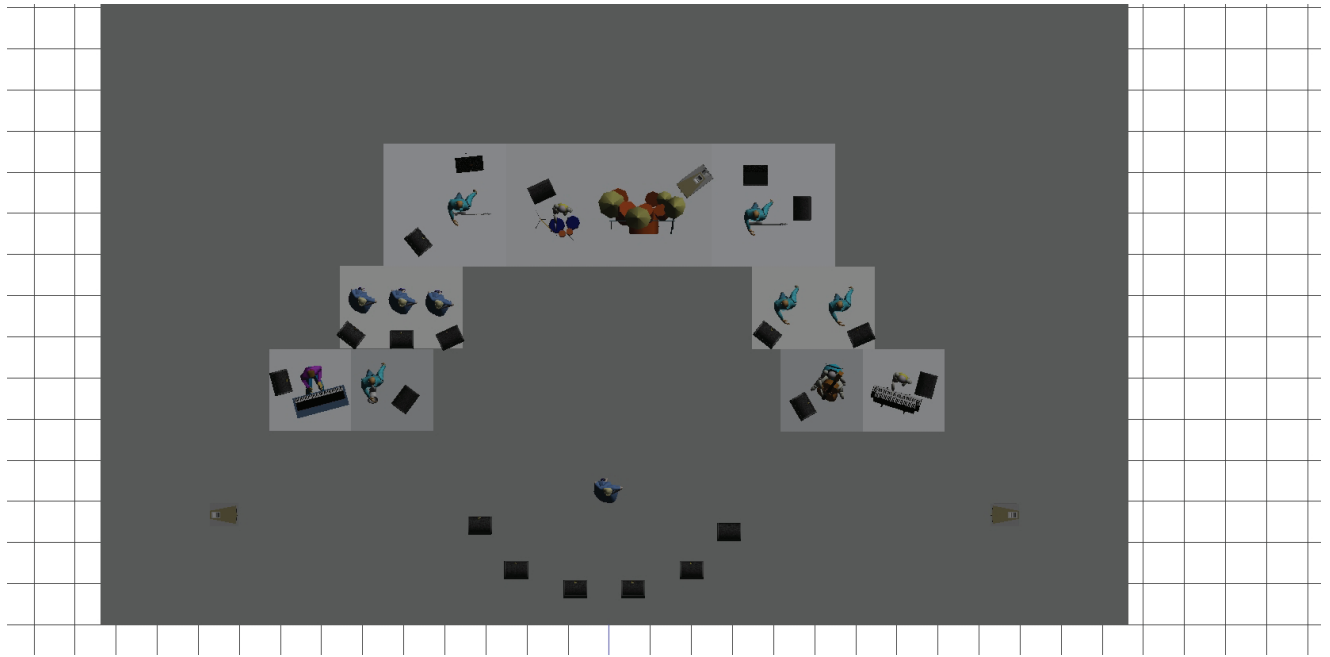
1 x dual 1/3 Octave Graphic EQ of Klark-Teknik
1 x Lexicon PCM-80 Reverb
1 x TC D - TWO Digital delays
1 x Yamaha SPX 900
1 x CD player

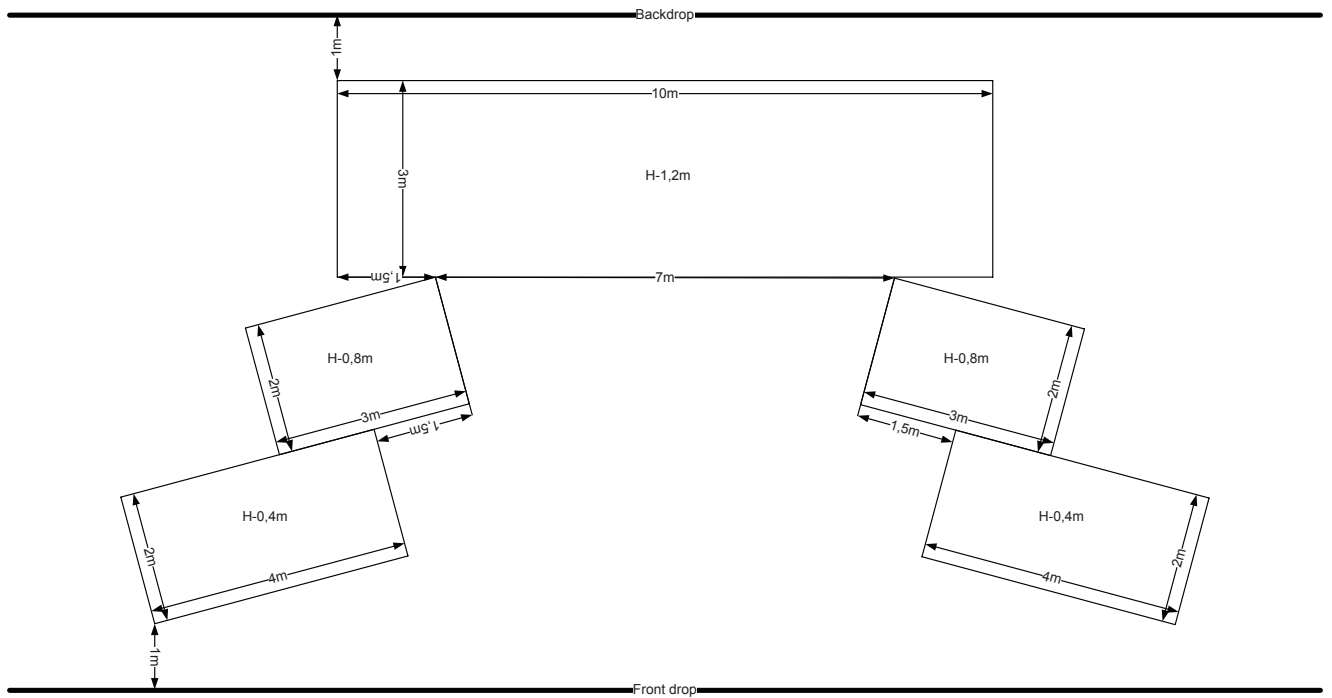
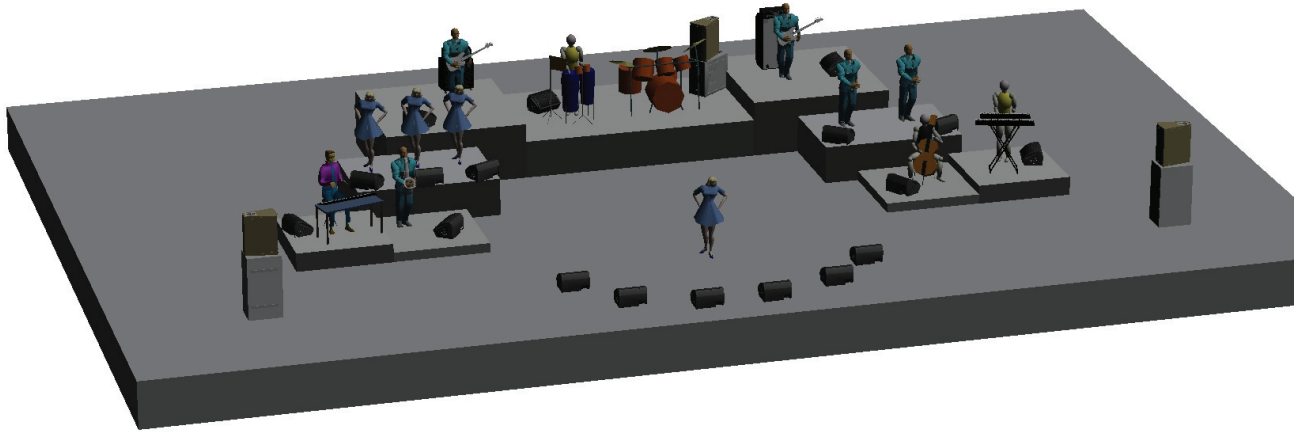
HOUSE INSERT RACK

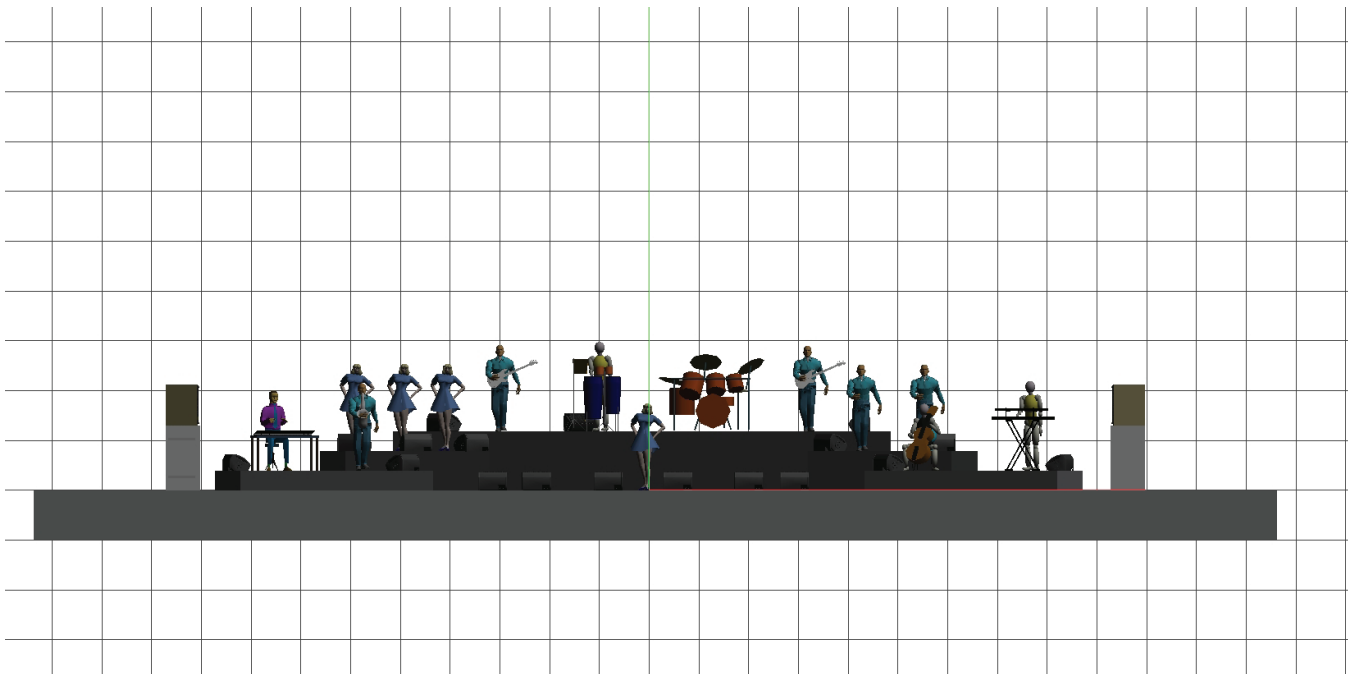
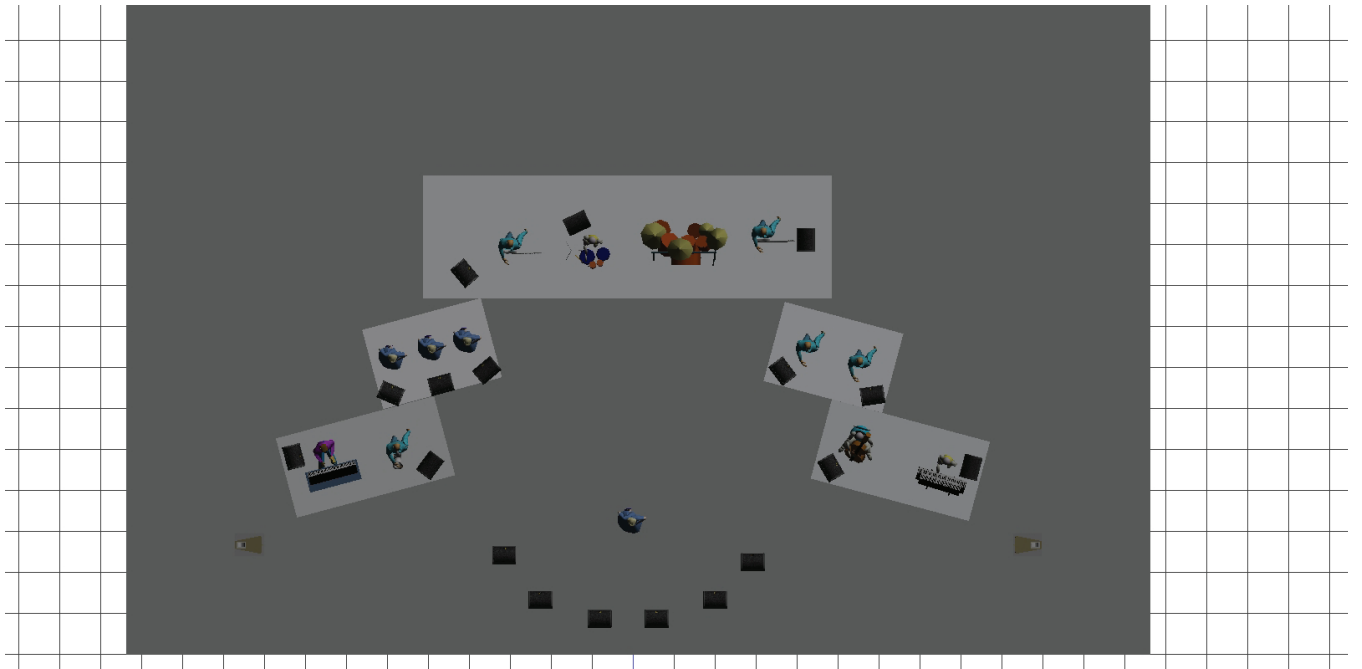
1 x KlarkTeknik-DN504 Compressor/Limiter (other way 1 x Drawmer DL 441)
1 x KlarkTeknik-DN514 quad gates (other way 2 x Drawmer DS 201 Gates)

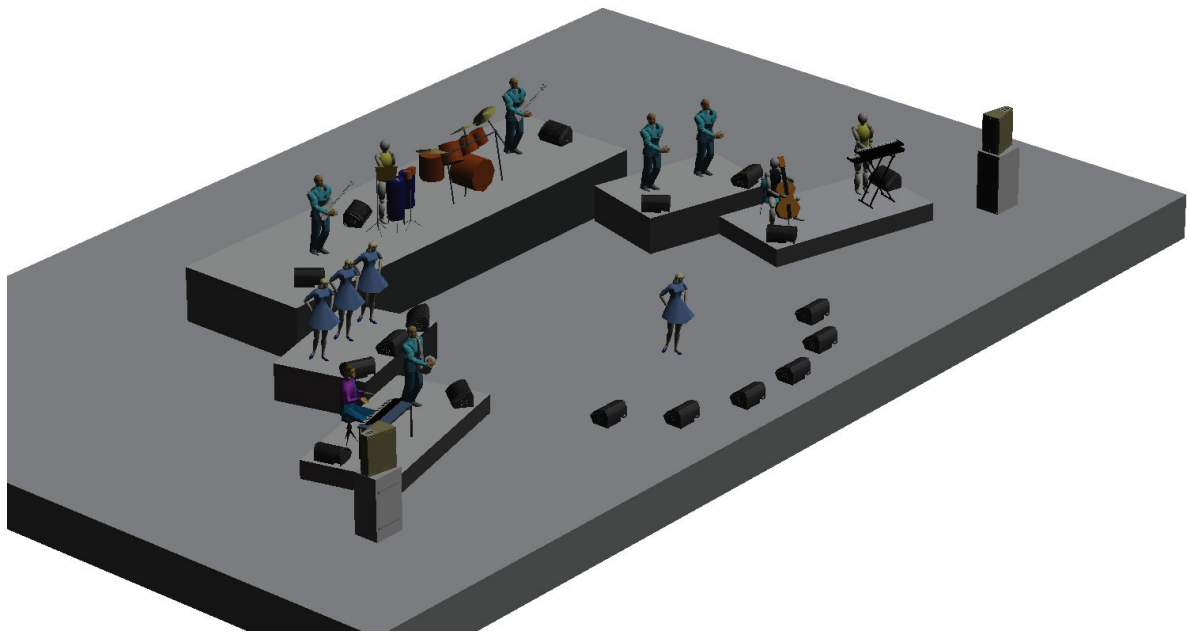
SCENE



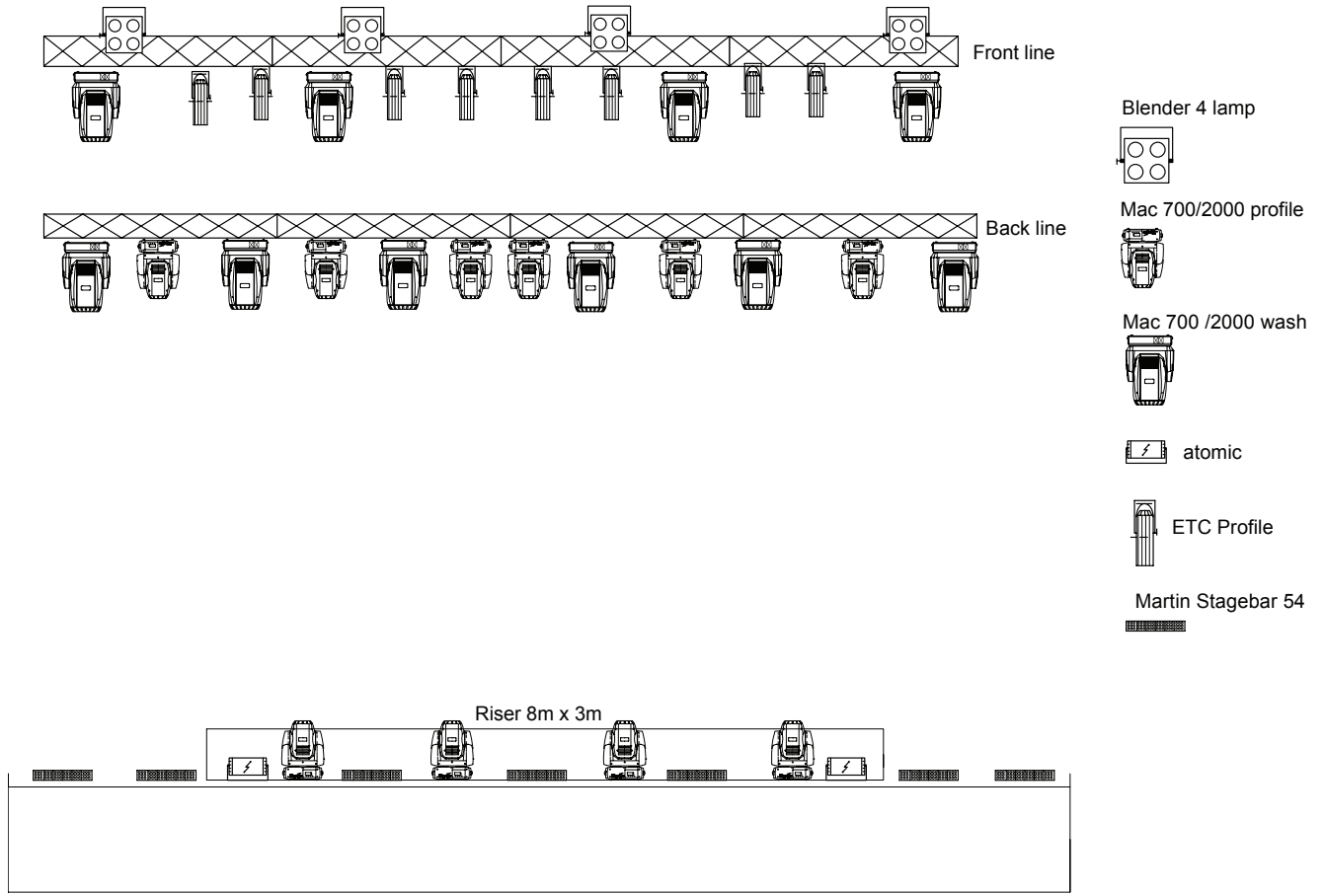








LIGHT PLOT



CONVENTIONAL

- 02 X 4 Lamp (DWE 120V 650W)
- 08 x ETC Profile 260
- 02 X Followspot 1200W MSR

SMOKE

- 01 X MDG
- 01 X Fan

EFFECTS

- 10 X SPOT Light – MAC 700 / 2000 Profile
- 10 X WASH Light – MAC700 / 2000 Wash
- 02 X Strobe 1500W – Atomic 3000
- 08 x Martin LED Stagebar 54

TRUSS

- 02 x 12 – 14 m square black truss lines

CONTROL

- 01 X Avolites Pearl
- 01 X Dimmer rack (24 ch)

ACCESSORIES

- 03 X TELEX Intercom stations with double headsets
- 01 X Set o fall necessary cabling, motors, rigging

STAFF

- 01 x console engineer
- 02 x followspot operators
- 01 x technician